

University of Pennsylvania English Language Programs

University Connection: From Intensive English Study to University Admissions



What is the University of Pennsylvania?

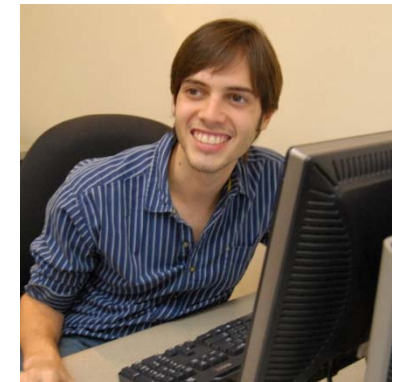
- ❑ Founded in 1740 by Benjamin Franklin, it is one of the oldest and most prestigious universities in the United States
- ❑ Informally called “Penn”, it is one of the 8 private universities known as “Ivy League.” Currently ranked #4 nationally.
- ❑ Made up of 4 undergraduate schools and 12 graduate schools, including the Wharton School of Business and the Fels Institute of Government
- ❑ Home to 23,500 students, including 4,000 international students.
- ❑ Beautiful campus with green lawns and landmark architecture



Student Life

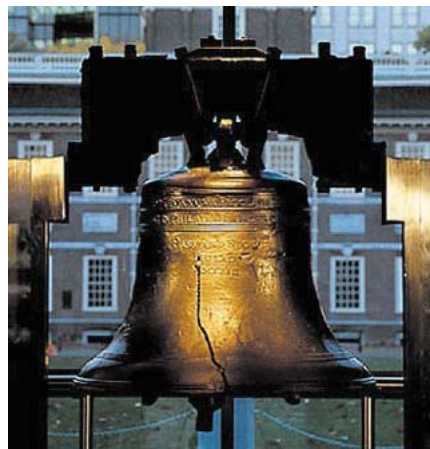


- ❑ Over 400 active on-campus student groups
- ❑ Recreational athletic clubs
- ❑ ELP Student Center
- ❑ Conversation Partners Program
- ❑ Planned social activities such as bowling, ice skating and potluck dinners
- ❑ Downtown Philadelphia has a lot of nice shopping, restaurants and sightseeing



Philadelphia

- ❑ Philadelphia, Pennsylvania is located on the East Coast of the US, between New York City and Washington, D.C.
- ❑ The original US capital, it is considered the birthplace of America.
- ❑ Philadelphia, known as “Philly” is called “The City of Brotherly Love”



What is University Connection?

- ❑ Academic English Program
- ❑ Prepares students for challenges in the application and admissions process
- ❑ Prepares students for rigorous academic study at the University level
- ❑ Choose from two concentrations:

**Academic Admissions &
Academic Intensive**



The Academic Admissions Concentration

If you want to gain admission into a college or university in the US and...

- ❑ Improve your English proficiency level
- ❑ Improve your test scores (TOEFL, SAT, GRE, GMAT)
- ❑ Get support and guidance on applying to colleges and universities in the US

The Academic Admissions Concentration

- Typically 3 sessions (6 months) of study
- Intensive English study—15-20 hours/week
- Up to 8 hours of one-on-one counseling with a professional college counselor
- Test preparation courses
- Orientation to US university culture



What types of classes will I take?

Intensive English Preparation

- ❑ “Applying to US Universities”
- ❑ “Writing University Application Essays”

Test Preparation Skills

- ❑ TOEFL Academic Skills
- ❑ TOEFL Test Strategies
- ❑ Individual SAT/ACT Tutoring
- ❑ Writing the GRE/GMAT Analytical Essay



Academic Intensive Concentration

If you plan to study in the US and want to...

- ❑ Improve your English proficiency level
- ❑ Strengthen your academic skills
- ❑ Develop academic qualifications with a credit course through the University of Pennsylvania

Academic Intensive Concentration

- Develop proficiency in English for Academic Purposes
 - Advanced Reading for Academic Purposes
 - Advanced Writing for Academic Purposes
 - Listening to Lectures
 - Writing Research Papers
 - Academic Vocabulary
- ELP/LPS sheltered course: Practice in a university classroom by enrolling in non-credit courses
- English for Academic Purposes Certificate (2 or more sessions)

English for Academic Purposes Certificate

- ❑ Demonstrate preparation for academic study at a US University
- ❑ Advanced-level English coursework, and University-level content
- ❑ You will have to:
 - Pass the Advanced Placement/Proficiency Test (APT)
 - Successfully complete a series of advanced level (800) academic English courses
 - Pass and academic credit course offered through Penn's College of Liberal and Professional Studies

UniConn Student Outcomes

UniConn students have come from nations across the world to pursue degree study in many fields, including business, engineering, law, genetics, nursing, mathematics, computer science, international relations, linguistics, and education.

- ▣ UniConn students have been accepted to a wide range of degree programs at both the undergraduate and graduate levels, including programs at the University of Pennsylvania and other top-tier universities or colleges.
- ▣ Students also receive a great deal of information and guidance that helps them make good decisions about pursuing ambitious goals, but also setting realistic goals for their education in the U.S.

Extracurricular and Volunteer Activities

- ❑ 250 clubs and organizations at Penn
- ❑ Assistance in identifying and joining clubs of interest
- ❑ Interaction with native speaking Penn students and local community citizens
- ❑ Learn US customs first-hand



Housing

- ❑ ELP House at the Sheraton
 - Single and double rooms; dormitory-style living with other ELP students
- ❑ International House
 - Single rooms in suites with other international students attending local schools
- ❑ Homestay with a local family
- ❑ Off-campus apartments for long-term stay
- ❑ On-campus dorms for summer programs (June-August only)



ELP House @ The Sheraton

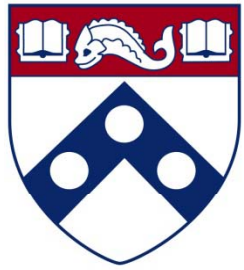


International House

Applying to the ELP

- See the ELP website for application and instructions according to program.
- For an F-1 visa, the ELP will prepare your I-20 after receiving your application materials and financial support statement.
- See the ELP website for housing application. Send application to the housing provider of choice.

www.sas.upenn.edu/elp



Penn

ENGLISH LANGUAGE PROGRAMS

For more information, contact the English Language Programs:

- ❑ By mail:
110 Fisher-Bennett Hall
3340 Walnut Street
Philadelphia, PA 19104-6274
USA
- ❑ By phone:
1-215-898-8681
- ❑ By fax:
1-215-898-2684
- ❑ By email:
elp@sas.upenn.edu
- ❑ On the internet:
www.sas.upenn.edu/elp

