

Data

- Public opinion polls for the UK
- csv format (>400 data points)
- Time interval: 04/09/2010 -1/week-> 12/04/2011 -5/week-> now
- voting intention, government approval (all polls)
- parties & sensitive issues (e.g. Taxation, Education, Immigration)
- politician traits (e.g. Charismatic, Strong, Decisive) (fortnightly)
- current issues (e.g. EU membership, Scottish independence, Lybia)
- Everything split by: Voting intention, VI relative to last election vote, Sex (2), Age group (4), Social Grade (2), Region (5)



The
University
Of
Sheffield.

Results

- Forecasting polls using text regression from tweets
- Novel model of sparse bilinear regression
- Selects sparse set of both users and words

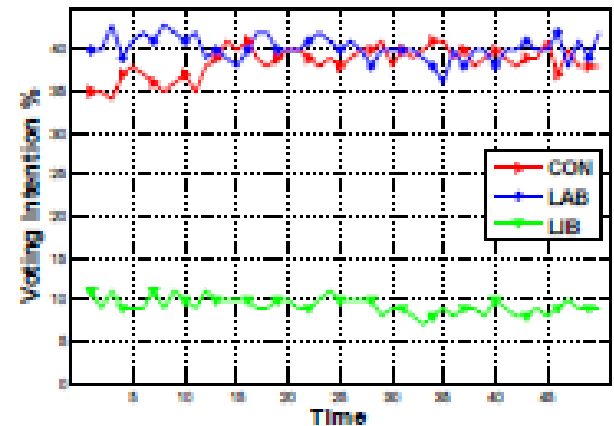
	CON	LAB	LBD	μ
B_{μ}	2.272	1.663	1.136	1.69
B_{last}	2	2.074	1.095	1.723
LEN	3.845	2.912	2.445	3.067
BEN	1.939	1.644	1.136	1.573
BGL	1.785	1.595	1.054	1.478

A User-centric Model of Voting Intention from Social Media

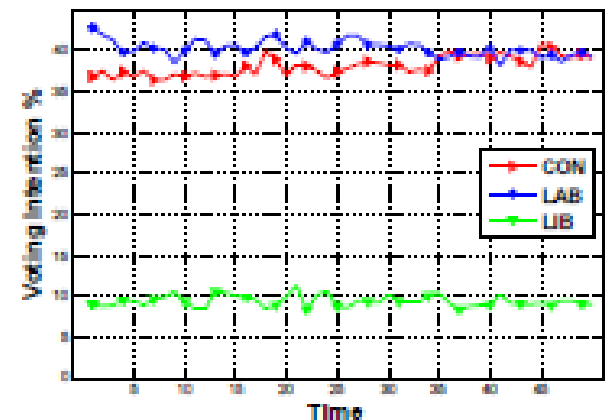
Bill Lampos, Daniel Preotiuc-Pietro, Trevor Cohn

ACL 2013

<http://www.preotiuc.ro>



Ground truth



BGL



Future plans

- poll prediction: regional and demographic
- prediction and features for the other time series (events, traits, issues)
- identifying events that affect variation in time series

e.g. increase in 'Sticks to what he believes in' for PM David Cameron after E.U. veto (2011)