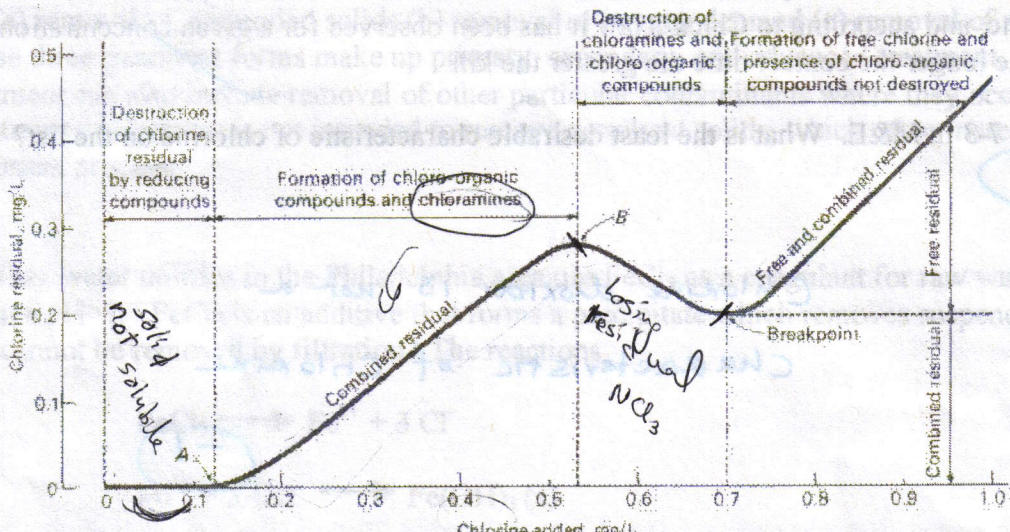


8. Refer to the breakpoint chlorination diagram below. Where along the x-axis is the process in question 7B going to occur?

This will happen at point A on the x axis.

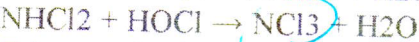
from 0 → P+A

$\frac{1}{2}$

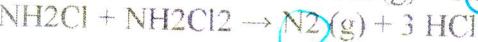
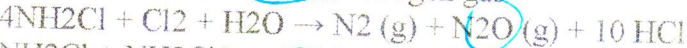


What happens to the nitrogen in the chloramines as waste treatment goes through the process of removing chloramines?

Nitrogen in chloramines will end up in form of NCl_3



Other mechanisms for the Nitrogen gas



10. Refer to figure 7-11 in M&E. Why is phenol a poor disinfectant (two possible answers that